

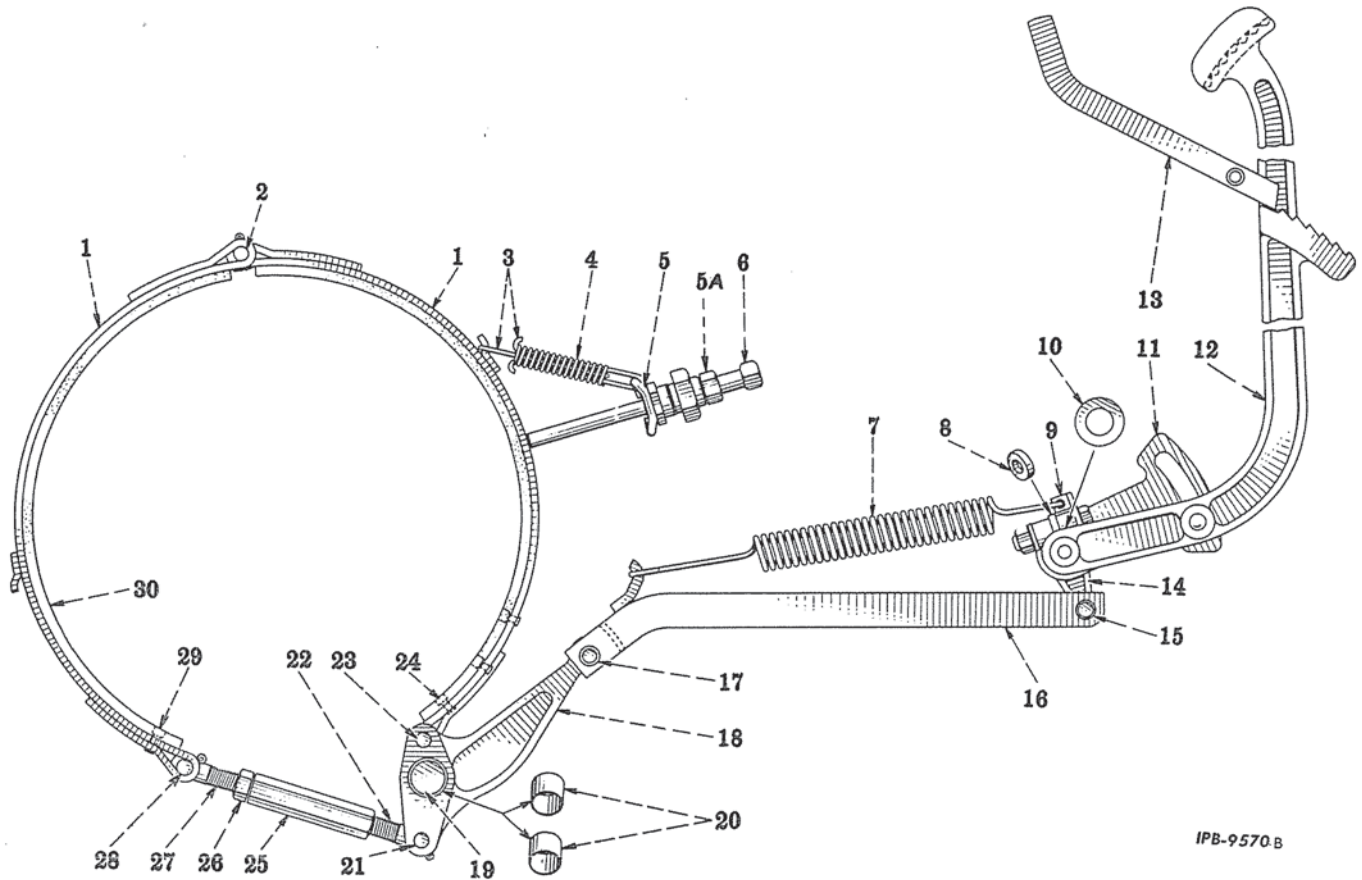
# STEERING SYSTEM



REF. NO.	PART NUMBER	DESCRIPTION	REF. NO.	PART NUMBER	DESCRIPTION
----------	-------------	-------------	----------	-------------	-------------

STEERING BRAKES AND CONTROLS

STEERING BRAKES AND CONTROLS - Continued



IPB-9570 B

1	703 387 C91	BAND w/LINING (long life), twenty-two RIVET, 269 164 R1 and two RIVET, 274 164 R1 steering brake (4)	7	53 495 D	SPRING, steering brake rod return (2)
1	274 160 R91	BAND w/four LINING (high capacity), twenty-two RIVET, 269 164 R1 and two RIVET, 274 164 R1 steering brake (optional with 603 468 C91) (x)	8	20 841 D	KEY, steering brake lever (2)
1	603 468 C91	BAND w/four LINING (high capacity), twenty-two RIVET, 269 164 R1 and two RIVET, 274 164 R1 steering brake (optional with 274 160 R91) (x)	9	53 497 D	ANCHOR, steering brake rod return spring (2)
2	274 165 R1	PIN, steering brake band joint (2) 1/8 x 1-1/8" cotter PIN (2)	10	41 519 D	SEAL, steering brake pedal shaft dirt (2)
3	269 178 R1	HOOK, steering brake band anchor spring (4)	11	53 503 DA	SHAFT and ADJUSTER, LH steering brake pedal
4	269 177 R1	SPRING, steering brake band anchor (2)	11	53 504 DA	SHAFT and ADJUSTER, RH steering brake pedal
5	43 664 DC	ANCHOR, steering brake return spring (2) 1" jam NUT (2)	12	275 179 R2	PEDAL, LH steering brake
5A		NUT, 5/8" brake band set screw lock (2)	12	275 180 R2	PEDAL, RH steering brake 1/2NF x 1-1/2" hex-hd cap SCREW (2) 1/2NF x 2-3/4" hex-hd cap SCREW (2) 1/2" lock WASHER (4)
6	53 490 D	SCREW, steering brake band set (2)	13	304 768 R91	PAWL, LH steering brake ratchet

(x) - Order Cut Length Required.



# STEERING SYSTEM



REF. NO.	PART NUMBER	DESCRIPTION
----------	-------------	-------------

REF. NO.	PART NUMBER	DESCRIPTION
----------	-------------	-------------

STEERING BRAKES AND CONTROLS - Continued

STEERING BRAKES AND CONTROLS - Continued

13	304 769 R91	PAWL, RH steering brake ratchet 1/8 x 5/8" cotter PIN (2)
14	8 444 DA	LEVER, steering brake (2) 1/2NF NUT (2) 1/2NF x 2-1/4" hex-hd cap SCREW (2) 1/2" lock WASHER (2)
15	103 498	PIN, 1/2" rod end (steering brake rod) (short) (2) 1/8 x 3/4" cotter PIN (2)
16	264 830 R21	ROD, steering brake (2)
17	275 734 R1 148 150	PIN, steering brake rod end (long) (2) SPRING, retainer (3/8" groove) (2)
18	274 167 R11	LEVER w/two BUSHINGS, 46 023 D, steering brake pivot (2)
19	274 698 R1	SHAFT, steering brake pivot (2)
20	46 023 D	BUSHING, steering brake pivot lever (4)
21	274 169 R1	PIN, steering brake band turnbuckle eye (short) (2) 1/8 x 1-1/8" cotter PIN (2)
22	274 168 R1	EYE, steering brake band turnbuckle (LH thread) (2)
23	274 165 R1	PIN, steering brake band pivot joint (2) 1/8 x 1-1/8" cotter PIN (2)
24	269 164 R1	RIVET, steering brake band (short) (88)
25	59 311 D	TURNBUCKLE, steering brake band (2)
26		Follows Reference No. 27
27	274 170 R1	EYE, steering brake band turnbuckle (RH thread) (2) 5/8NF NUT (2)
28	274 165 R1	PIN, steering brake band turnbuckle eye (long) (2) 1/8 x 1-1/8" cotter PIN (2)
29	274 164 R1	RIVET, steering brake band (long) (8)
30		LINING, steering brake band (order 274 166 R91) (16)
	105 422	ELBOW, steering brake pedal shaft lubrica- tion fitting (†)
	273 348	FITTING, steering brake pedal shaft lubrica- tion (Alemite 1684-B) (optional with 443 564) (†)
	443 564	FITTING, steering brake pedal shaft lubrica- tion (Lincoln 5009) (optional with 273 348) (†)
	127 743	FITTING, steering brake pedal shaft lubrica- tion (2)
	53 514 DB	LOCK, steering brake pedal adjuster (2)
	274 166 R91	PACKAGE, steering brake lining (high capacity) field service (consists of four LINING, twenty-two RIVET, 269 164 R1 and two RIVET, 274 164 R1) (for use with steering brake BAND, 274 160 R91) (4)
	604 942 C91	PACKAGE, steering brake lining (high capacity) field service (consists of four LINING, twenty-two RIVET, 269 164 R1 and two RIVET, 274 164 R1) (for use with steer- ing brake BAND, 603 468 C91) (4)
	703 388 C91	PACKAGE, steering brake lining (long life field service (consists of four LINING, twenty-two RIVET, 269 164 R1 and two RIVET, 274 164) (for use with steering brake BAND, 703 387 C91) (4)

274 699 R1	SPACER, steering brake pivot lever (2)
277 209 R1	STUD, steering brake pivot shaft (2) 1/2" lock WASHER (2)

(†) - Used On Power Shift Loaders.

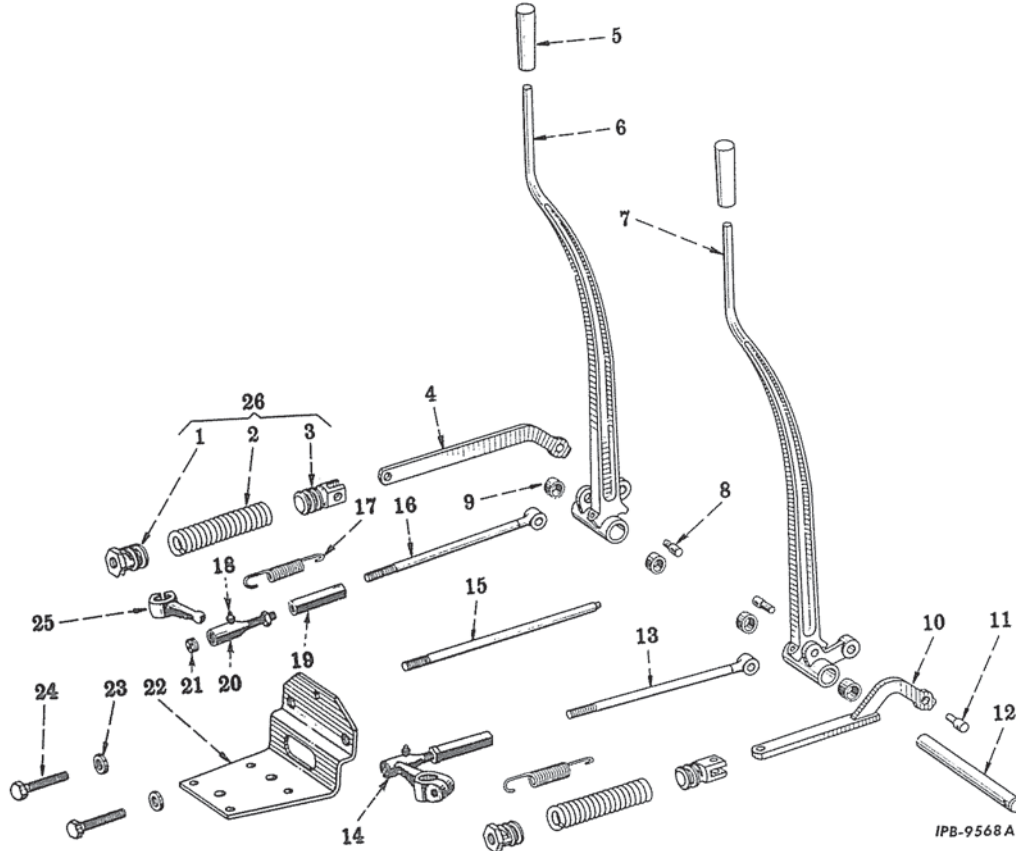
# STEERING SYSTEM



REF. PART NO.	PART NUMBER	DESCRIPTION	REF. PART NO.	PART NUMBER	DESCRIPTION
---------------	-------------	-------------	---------------	-------------	-------------

STEERING CLUTCH CONTROLS

STEERING CLUTCH CONTROLS - Continued



1	275 219 R1	NUT, steering clutch hand lever booster spring adjuster (2)	7	278 141 R11	LEVER ASSY, RH steering clutch hand (*) (Composed of -
2	275 218 R1	SPRING, steering clutch hand lever booster (2)			2 BUSHING 42 175 D
3	275 220 R1	YOKE, steering clutch hand lever booster spring (2)			1 EYE 275 785 R1
4	275 715 R1	LINK, LH steering clutch hand lever booster spring (order LINK, 604 737 C1, together with EYE, 275 784 R2, steering clutch operating turnbuckle)			1 HANDLE 619 405 C1
		L-150G 6519 to 11055			§1 LEVER 59 310 D
4	604 737 C1	LINK, LH steering clutch hand lever booster spring (together with EYE, 275 784 R2, will work for LINK, 275 715 R1)			1 PIN 257 620 R1)
	103 385	1/8 x 1" cotter PIN			7/16" NUT
	147 587	23/32 x 1-3/8" x 13 ga. WASHER			7/16 x 1-1/4" hex-hd cap SCREW
		L-150G 11056 up	7	327 981 R11	LEVER ASSY, RH steering clutch hand (†)
5	619 405 C1	HANDLE, steering clutch hand lever (2)			(Composed of -
6	278 140 R11	LEVER ASSY, LH steering clutch hand (Composed of -			2 BUSHING 42 175 D
		2 BUSHING 42 175 D			1 EYE 275 785 R1
		1 EYE 275 784 R2			§1 LEVER 59 310 D
		1 HANDLE 619 405 C1			1 PIN 257 620 R1)
		§1 LEVER 59 310 D			7/16" NUT
		1 PIN 257 620 R1)			7/16 x 1-1/4" hex-hd cap SCREW
	271 500	7/16" NUT	8	59 310 D	PIN, steering clutch operating turnbuckle eye (2)
	179 860	7/16 x 1-1/4" hex-hd cap SCREW			9 42 175 D BUSHING, steering clutch hand lever (4)
			9	42 175 D	
			10	275 716 R91	LINK, RH steering clutch hand lever booster spring (*)
					§ - Not Furnished Separately.
					(†) - Used On Power Shift Loaders.
					(*) - Used On Manual Shift Loaders.



# STEERING SYSTEM



REF. NO.	PART NUMBER	DESCRIPTION
STEERING CLUTCH CONTROLS - Continued		
10	327 979 R1	LINK, RH steering clutch hand lever booster spring (†) 1/8 x 1" cotter PIN 23/32 x 1-3/8" x 13 ga. WASHER
11	257 620 R1	PIN, steering clutch booster link front (2)
12	275 217 R1	SHAFT, steering clutch hand lever 5/16 x 2" hex-hd cap SCREW 5/16" lock WASHER
13	275 785 R1	EYE, RH steering clutch operating turnbuckle 5/8NF jam NUT (LH thread)
14	59 313 D	SOCKET, RH steering clutch operating turnbuckle 5/8NF jam NUT
15	275 223 R1	BRACE, steering clutch hand lever booster spring anchor (*)
15	327 980 R1	BRACE, steering clutch hand lever booster spring anchor (†) 5/8" jam NUT (2)
16	275 784 R2	EYE, LH steering clutch operating turnbuckle 5/8NF jam NUT (LH thread)
17	59 315 D	SPRING, steering clutch release lever return (2)
18	109 461	FITTING, steering clutch operating turnbuckle socket lubrication (2)
19	59 311 D	TURNBUCKLE, steering clutch operating (2)
20	59 312 D	SOCKET, LH steering clutch operating turnbuckle 5/8NF jam NUT
21	59 314 D	PLUG, steering clutch operating turnbuckle socket (2) 1/8 x 1-1/2" cotter PIN (2)
22	275 224 R1	ANCHOR, steering clutch hand lever booster spring
	20 009 R1	SCREW, 7/16 x 1-1/2" hex-hd cap (4) L-150P 6501 to 9812 (4) L-150G 6519 to 9812
	20 050 R1	BOLT (nylock) (4) L-150P 9813 up (4) L-150G 9813 up 15/32 x 59/64" x 16 ga. WASHER (4)
23	257 625 R1	WASHER, steering clutch hand lever booster spring adjuster bolt (2)
24	275 222 R1	BOLT, steering clutch hand lever booster spring adjuster (2)
25	59 317 DA	LEVER, steering clutch release (2) 1/2NF NUT (2) 1/2NF x 2-1/2" hex-hd cap SCREW (2) 1/2" lock WASHER (2)
26	275 221 R91	SPRING w/NUT, 275 219 R1, SPRING, 275 218 R1 and YOKE, 275 220 R1, steering clutch hand lever booster (2) 1/2" rod end PIN (2) 1/8 x 7/8" cotter PIN (2)
	109 461	FITTING, steering clutch hand lever lubrication (2)
	109 454	FITTING, steering clutch operating turnbuckle eye lubrication (2)

(†) - Used On Power Shift Loaders.  
 (\*) - Used On Manual Shift Loaders.





# MEMORANDA



# STEERING SYSTEM

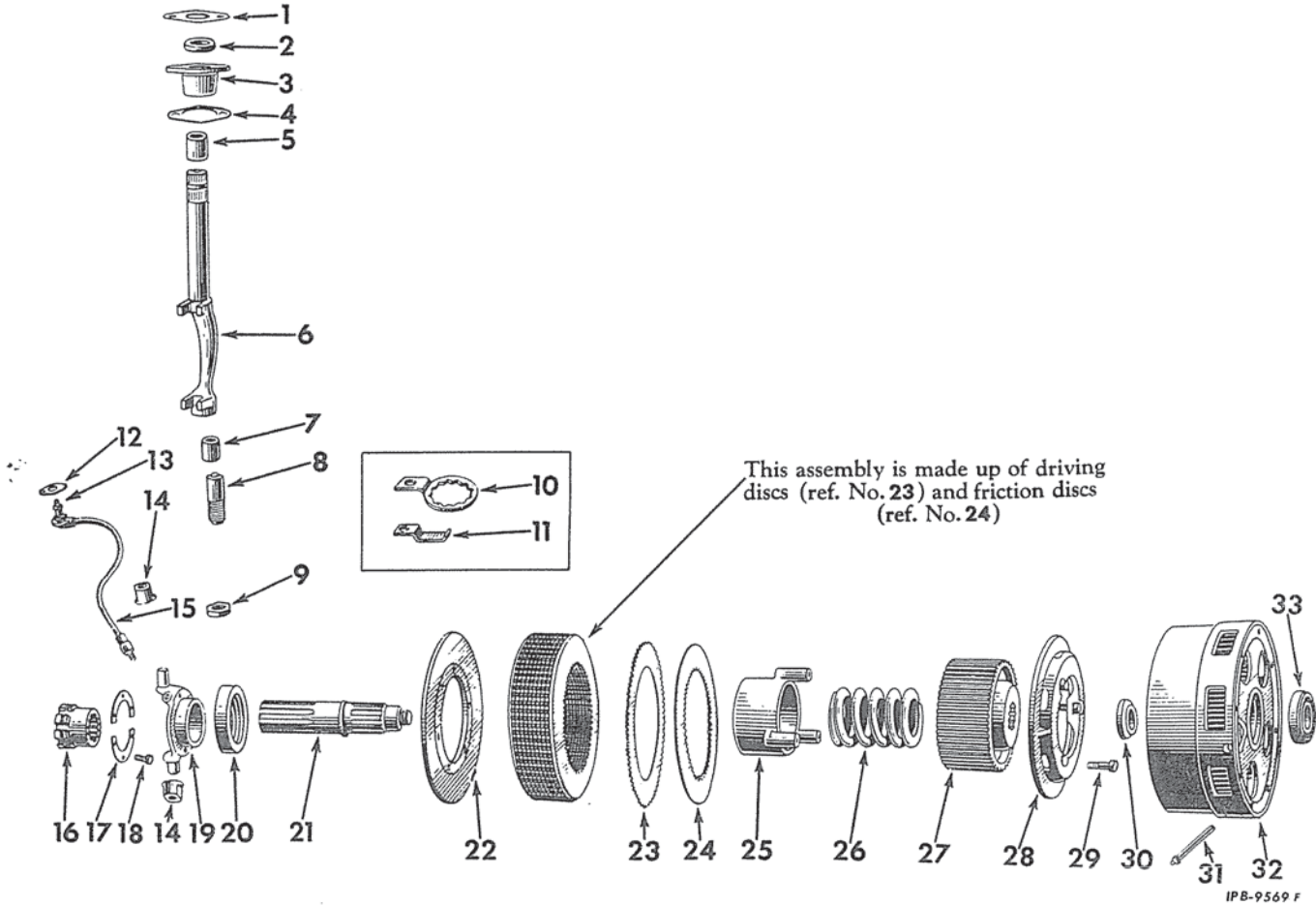


REF. PART NO.	PART NUMBER	DESCRIPTION
---------------	-------------	-------------

REF. PART NO.	PART NUMBER	DESCRIPTION
---------------	-------------	-------------

STEERING CLUTCH RELEASE SHAFT AND MECHANISM

STEERING CLUTCH RELEASE SHAFT AND MECHANISM - Continued



1	46 040 D	RETAINER, steering clutch release shaft bearing felt (2)	10	60 096 D	LOCK, steering clutch release fork pivot nut (2)
	871 570 R1	7/16 x 1" nylock BOLT (4)	11	60 095 D	LOCK, steering clutch release fork pivot (2) 1/2 x 1" hex-hd cap SCREW (2) 1/2" lock WASHER (2)
2	46 038 D	FELT, steering clutch release shaft bearing (2)	12	282 233 R1	GASKET, release bearing grease tube (2)
3	604 366 C11	BEARING w/BUSHING, 53 597 D, steering clutch release shaft (2)	13	127 743	FITTING, steering clutch release bearing lubrication (2)
4	338 249 R1	GASKET, steering clutch release shaft	14	42 298 DB	BUSHING, steering clutch release pin (4)
5	53 597 D	BUSHING, steering clutch release shaft (2)	15	52 244 DX	TUBE w/COUPLING and BRACKET, steering clutch release bearing grease (2)
6	55 959 DD	FORK w/BUSHING, 55 955 DA and FITTING, 109 461 steering clutch release (2)		13 253 R1	BOLT, 1/4 x 1" sq-hd mach (4) 1/4" NUT (4) 1/4" lock WASHER (4)
7	55 955 DA	BUSHING, steering clutch release fork pivot (2)	16	254 967 R21	COUPLING w/PLUG, 324 745 R1, steering clutch shaft (6 T) (2)
8	55 954 DA	PIVOT, steering clutch release fork (2)	17	254 968 R1	RETAINER, steering clutch shaft coupling (4)
9	47 726 D	NUT, steering clutch release fork pivot lock (2)			



# STEERING SYSTEM



REF. NO.	PART NUMBER	DESCRIPTION
STEERING CLUTCH RELEASE SHAFT AND MECHANISM - Continued		
18	333 785 R1	BOLT, steering clutch shaft coupling retainer (12)
19	52 243 DAX	COLLAR w/PLUG, 103 883, steering clutch release (2)
20	55 745 D	BEARING, steering clutch release thrust (2)
21	258 277 R2	SHAFT, steering clutch (2)
22	6 470 D	PLATE, steering clutch hub (2) 7/16 x 1" hex-hd cap SCREW (12) 7/16" lock WASHER (12)
23	46 826 D	DISC, steering clutch driving (20 used on units not equipped with ATTACHMENT, 320 398 R91) (22 used on units equipped with ATTACHMENT, 320 398 R91)
24	624 849 C1	DISC, steering clutch friction (not used with ATTACHMENT, 320 398 R91) (22)
24	320 395 R91	DISC, steering clutch friction (used with ATTACHMENT, 320 398 R91) (24)
25	8 236 DA	RETAINER, steering clutch pressure spring (2)
26	54 610 DB	SPRING, steering clutch pressure (2)
27	8 238 DB	HUB, steering clutch (2)
28	8 237 DB	PLATE, steering clutch pressure (2)
29	54 969 D	BOLT, steering clutch pressure plate dowel (6)
30	52 239 D	SPACER, steering clutch pilot bearing (2)
31	46 831 D	FITTING, steering clutch pilot bearing lubrication (2)
32	8 235 DB	DRUM, steering clutch (2)
	338 357 R1	BOLT, steering clutch drum (16)
33	ST 333	BEARING, steering clutch pilot (2)
	109 461	FITTING, steering clutch release fork lubrication (2)
	105 404	NIPPLE, steering clutch release collar (1/8 x 3/4" long cloved nipple) (2)
	258 278 R1	NUT, steering clutch pilot bearing retainer (2)
	103 883	PLUG, 1/8" hdls steering clutch release collar pipe (2)
	324 745 R1	PLUG, steering clutch shaft coupling (2)
	320 398 R91	ATTACHMENT, bi-metallic steering clutch (consists of twenty-four DISC, 320 395 R91 and two DISC, 46 826 D) (see NOTE 3)

NOTE 3 - Field Application - Order Through Regular Service Parts Channels.